



RJ-H6601

医护床
Hospital Bed



RJ-H6603

双摇医护床
Double Hospital Bed



RJ-H6603

单摇医护床
Single Hospital Bed



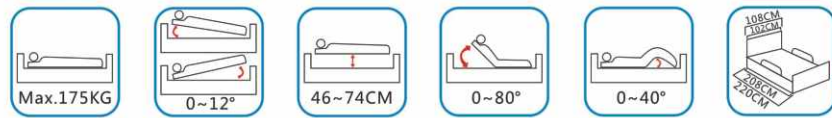
RJ-H6602

单摇医护床
Single Hospital Bed



RJ-H6661

豪华可称重电动车
Deluxe Weighing
Electric Bed



RJ-H6662

手动/电动三折升降床
Manual three-bend Bed



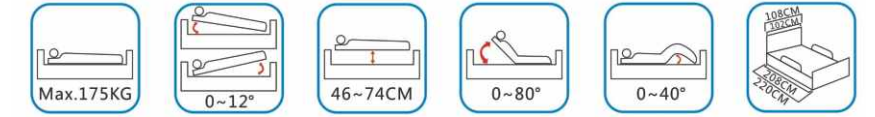
RJ-H6663

电动三折升降床
Elec.three bend Bed



RJ-H6664

可倾斜五功能电动床
Five Functions
Elec. Bed





RJ-E7602

检查床
Examining Bed Series



RJ-G7302

妇科检查床
Gynecological Examining Bed



RJ-G7501

妇科检查床
Gynecological Examining Bed



RJ-N111

老年椅
Elderly Bed

RJ-J111

吊针椅
Transfusion Chair





RJ-T6810

喷塑架 防火板桌面 高度可调 (气杆)
带刹万向轮
Power-coated steel frame, anti-fire laminated desktop, height adjustable (by spring gaz), universe wheels with brake



RJ-T6812

喷塑架 可旋转式防火板桌面 高度可调 带刹万向轮
Power-coated steel frame, tilttable anti-fire laminated desktop, height adjustable, 4 universe wheels with brake



RJ-T6813

喷塑架 可旋转式防火板桌面 高度可调 (气杆) 带刹万向轮
Power-coated steel frame, tilttable anti-fire laminated desktop (by spring gaz), 4 universe wheels with brake



RJ-T6814

喷塑架 防火板桌面 高度可调 带刹万向轮
Power-coated steel frame, anti-fire laminated desktop, height adjustable, 4 universe wheels with brake



RJ-T6832

快拆式喷塑架 防火板桌面 高度可调
Fast release power-coated steel frame, anti-fire laminated desktop, height adjustable



RJ-T6832B

快拆式喷塑架 防火板桌面 高度可调 带刹万向轮
Fast release power-coated steel frame, anti-fire laminated desktop, height adjustable, 4 universe wheels with brake



RJ-T6833B

快拆式喷塑架 防火板桌面 高度可调 带刹万向轮
Fast release power-coated steel frame, anti-fire laminated desktop, height adjustable, 4 universe wheels with brake

规格 SIZE	型 号 MODEL	←	→	↑	CM	NW	GW	PCS	规格 SIZE	型 号 MODEL	←	→	↑	CM	NW	GW	PCS
	RJ-T6810	77	40	70-88	41*23*77	17/18	2			RJ-T6814	70	40	74+	41*21*77	19/20	2	
	RJ-T6812	88	40	73-120	41*23*77	18/19	2			RJ-T6832	66	42	62+	41*18*70	6.7/7.5	1	
	RJ-T6813	88	40	73-120	41*23*77	19/20	2			RJ-T6832B	66	40	67+	45*17*77	7/7.8	1	
										RJ-T6833B	63	42	66+	62*10*57	7/7.8	1	



RJ-B5
Bedside Cabinet

Size with wheels : 535*530*775 mm
N.W. : 10.5KG
Size without wheels : 780*530*530mm
N.W. : 10.5KG
Size with wheel and shoe cabinet : 960*530*530mm
N.W. : 10.5KG
Size with wheel ,without shoe cabinet : 910*530*530mm
N.W. : 10.5KG



CKD package size:
540*300*660mm
1*40HQ:597pcs
1*20GP:249pcs



Castors and Kettle base are optional

Advantages :

- ★ Strong aluminum frame ;
- ★ All material is ABS ;
- ★ Aluminum rails on the top board for moving easily;
- ★ Alumium towel hanger.



RJ-B1
Bedside Cabinet
With castors
PP frame
ABS door and drawer
Size:480x480x760mm
1*40HQ:336pcs
1*20GP:144pcs



RJ-B2
Bedside Cabinet
Without castors
PP frame
ABS door and drawer
Size:480x480x760mm
1*40HQ:336pcs
1*20GP:144pcs



RJ-D8
Treatment Trolley
Size:650x450x900mm



RJ-D9
Treatment Trolley
Size:850x500x900mm
N.W:13KG



KY-D10 (M.L)
Treatment Trolley
Middle size:720x420x800mm
Large size:800x425x865mm



RJ-D11
Dressing Trolley
Size: 560x380x825mm
Packing size: 950x410x750mm
N.W.: 11.5KG



RJ-D12
Treatment Trolley
Size: 650x450x800mm
Packing Size: 660x440x880mm
N.W.: 15KG



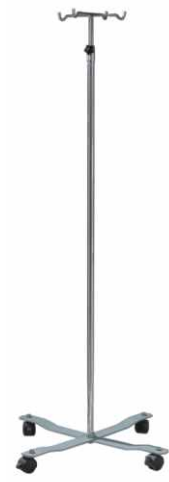
RJ-F19
Air Pressure
Operation Stool (Plastic Seat Cover)
Size: Φ320x480/600 (Plastic Seat Cover)



RJ-F20
Air Pressure
Operation Stool (Pu Seat Cover)
Size: Φ330x490/600 (Pu Seat Cover)



RJ-F21
Operation
Stool With Backrest



RJ-G3
IV Stand With Steel Base
Size:1230-2080mm
Packing:1200x400x300mm
680x270x170mm
N.W:3KG



RJ-G7
IV Stand With 5 Wheels Chromed Steel Base
Size:1130-1900mm
Packing:1200x400x300mm
500x500x330mm
N.W: 2.8KG



RJ-F2
Stainless Steel Foot Stool
Packing size :620*430*680mm 2PCS/CTN
N.W:10KG



RJ-F3
Stainless Steel Foot Stool
Size:380x280x270mm
Packing:49x33x33mm
N.W:5.8KG



RJ-512
IV pole&holder



RJ-565
Oxygen cylinder



RJ-566
Stick seat



RJ-576L
Water bottle cage



RJ-564
Cushion
Packing Size:41*21*49cm,
4pcs/ctn, N.W:3kg Per Ctn



RJ-567
Cushion



RJ-DJ01
Foldaway Stretcher



RJ-DJ02
Foldaway Stretcher



RJ-DJ03
Foldaway Stretcher



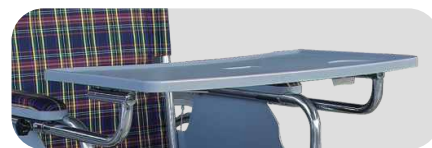
RJ-661B
Bed pan



RJ-662B
MAX:400ML
Urinal



RJ-663B
MAX:400ML
Urinal



RJ561
Food table



RJ574
Food table



RJ574-A 
Food table



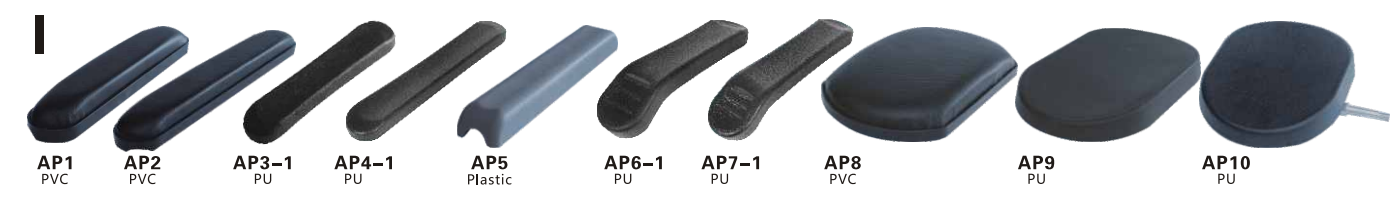
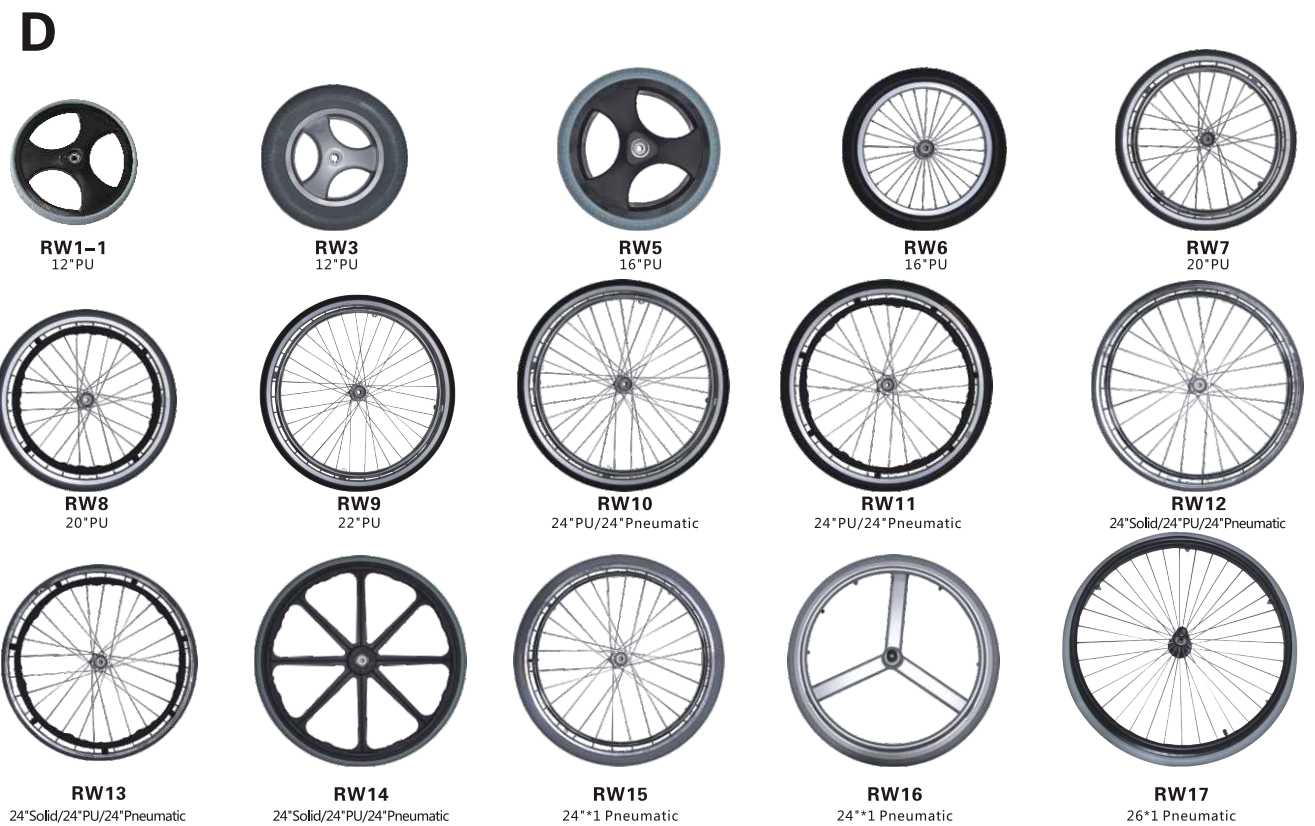
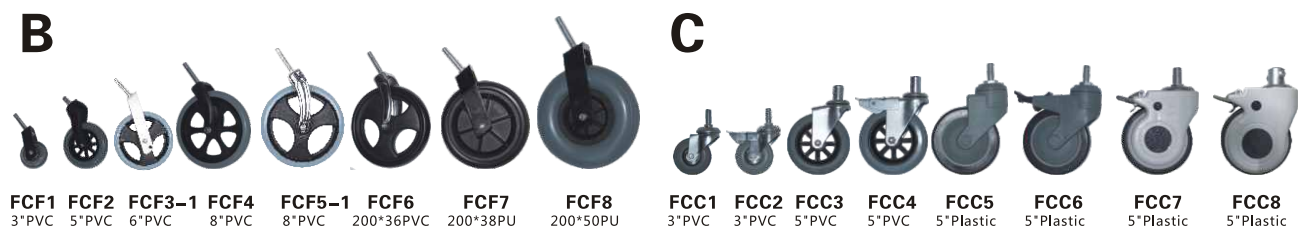
RJ-664B
MAX:400ML
Urinal



RJ-665B
MAX:400ML
Urinal



RJ-666B
MAX:600ML
Urinal



A Front castor

Note: Tyre color can be grey or black

- FC1 2.5"PVC
- FC2 5"PVC without bearing
- FC3 5"PVC with bearing
- FC4-1 6"PVC
- FC5-1 8"PVC
- FC6 200*30PVC
- FC7 200*36PVC
- FC8 200*38PU
- FC9 200*50PU

B Front castor with fork

Note: Fork color and material are optional.

- FCF1 3"PVC with black aluminum fork
- FCF2 5"PVC with plastic fork
- FCF3-1 6"PVC with aluminum fork
- FCF4 8"PVC with black steel fork
- FCF5-1 8"PVC with chromed steel fork
- FCF6 200*36 PVC with chromed steel fork
- FCF7 200*38 PU with black aluminum fork
- FCF8 200*50 PU with black aluminum fork

C Front castor for commode wheelchair

- FCC1 3"PVC castor with steel fork
- FCC2 3"PVC castor with steel fork and brake
- FCC3 5"PVC castor with steel fork
- FCC4 5"PVC castor with steel fork and brake
- FCC5 5"Plastic castor with plastic fork
- FCC6 5"Plastic castor with plastic fork and brake
- FCC7 5"Plastic castor with plastic fork and brake
- FCC8 5"Plastic castor with plastic fork and brake

D Rear wheel

- RW1-1 12"PU plastic
- RW3 12"PU with aluminum frame
- RW5 16"PU plastic
- RW6 16"PU with aluminum frame
- RW7 20"PU with aluminum frame and handrim
- RW8 20"PU with aluminum frame and plastic handrim
- RW9 22"PU with aluminum frame and handrim
- RW10 24"PU with aluminum frame and aluminum handrim
- RW10 24"Pneumatic with aluminum frame and aluminum handrim
- RW11 24"PU with aluminum frame and plastic handrim
- RW11 24"Pneumatic with aluminum frame and plastic handrim
- RW12 24"Solid with steel frame and chromed handrim
- RW12 24"PU with steel frame and chromed handrim
- RW12 24""Pneumatic with steel frame and chromed handrim
- RW13 24"Solid with steel frame and plastic handrim
- RW13 24"PU with steel frame and plastic handrim
- RW13 24"Pneumatic with steel frame and plastic handrim
- RW14 24"Solid plastic rear wheel
- RW14 24"PU plastic rear wheel
- RW14 24"Pneumatic plastic rear wheel
- RW15 24"*1 Pneumatic with aluminum frame and aluminum handrim, quick-released
- RW16 24"*1 Pneumatic with aluminum frame ,aluminum handrim, quick-released
- RW17 26*1 Pneumatic with black aluminum frame ,aluminum handrim, quick-released

E Footplate

Note: Aluminum footplate's color can be bright silver or black.

- FP1 Small size aluminum footplate
- FP2 Middle size aluminum footplate
- FP3 Large size aluminum footplate
- FP4 Aluminum footplate
- FP5 Small size plastic footplate
- FP6 Middle size plastic footplate
- FP7 Large size plastic footplate
- FP8 Plastic footplate
- FP9 Plastic footplate

F Rubber tip

- RT1 \varnothing 13with grey and black color
- RT2 \varnothing 16with black and grey color
- RT3 \varnothing 19with brown, grey and black color
- RT4 \varnothing 22with yellow and grey color
- RT5 \varnothing 22with grey color
- RT6 \varnothing 25with grey color
- RT7 \varnothing 28with grey and black color
- RT8 \varnothing 28with grey color

G Footrest

- FR1 22mm aluminum with aluminum footplate
- FR1 25mm steel with aluminum footplate
- FR2 22mm aluminum with plastic footplate
- FR3 22mm aluminum with aluminum footplate
- FR3 25mm steel with aluminum footplate
- FR4 22mm aluminum with plastic footplate
- FR5 22mm aluminum with aluminum footplate
- FR5-1 25mm steel with aluminum footplate(two holes distance is 33mm for KY607GC)
- FR6-1 25mm steel with aluminum footplate(two holes distance is 83mm for KY608GC KY903GC etc)

H Hand grip

- HG1 For crutch KY925L
- HG2 For crutch KY925L
- HG3 For crutch KY925L
- HG4 For crutch KY925L
- HG5 For crutch KY925L
- HG6 Hand for walker(with black and grey color)
- HG7 Hand for cane (with black and grey color)
- HG8 PVC hand for 22 tube(KY809 steel wheelchair)
- HG9 PVC hand for 22 tube (Aluminum wheelchair)
- HG10 PVC hand for 25 tube

I Armrest and footrest pad

- AP1 L:26.7*W:5.3cm black PVC
- AP2 L:33.50*W:5.3cm black or dark blue PVC
- AP3-1 L:26*W:5.2cm PU
- AP4-1 L:32.30*W:4.6cm PU
- AP5 L:27.80*W:5.1cm grey plastic
- AP6-1 L:25.70*W:4.30cm PU
- AP7-1 L:28*W:4cm PU
- AP8 L:24*W:15cm PVC
- AP9 L:25*W:15cm PU
- AP10 L:15.90*W:11.90cm PU

J Armrest

K Bearing and Hub

L Fork

M Brake

N Spare parts of commode wheelchair



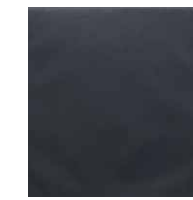
UC1(PVC)



UC2(PVC)



UC3(PVC)



UC4(Nylon)



UC5(Nylon)



UC6(Nylon)



UC7(Nylon)



UC8(Nylon)



UC9(Nylon)



UC10(Nylon)



UC11(Nylon)



UC12(Nylon)



UC13(Nylon)



UC14(Nylon)



UC15(Mesh)



UC16
(Mesh in the middle,
nylon on both sides)



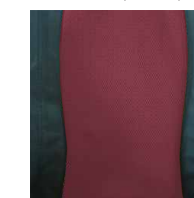
UC17
(Mesh in the middle,
nylon on both sides)



UC18 Orange
(Mesh in the middle,
nylon on both sides)

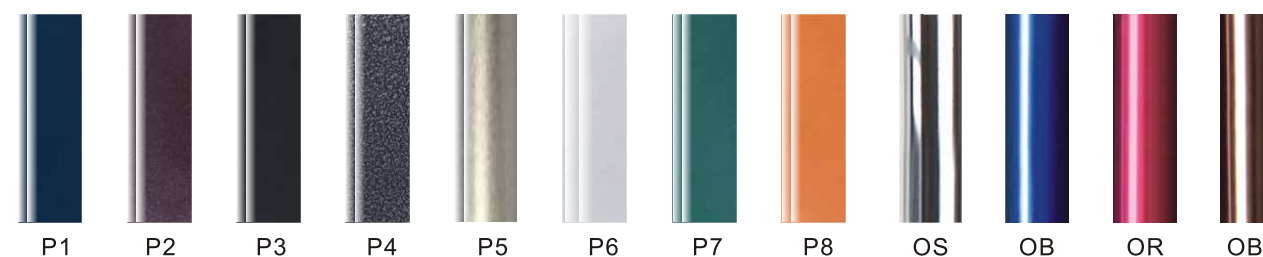


UC19 Light grey
(Mesh in the middle,
nylon on both sides)



UC20 Wine red
(Mesh in the middle,
nylon on both sides)

Wheelchair Frame Color Sample



Powder coating

- P1. Italian blue
- P2. Purplish red
- P3. Bright black
- P4. Explode light black
- P5. Silver
- P6. Porcelain white
- P7. Green
- P8. Orange

Oxidation

- OS. Oxidation Silver
- OB. Oxidation Blue
- OR. Oxidation Red
- OBE. Oxidation Bronze

Liquid Powder coating

- LCR. Chiese Red
- LG. Light Green
- LO. Light Orange
- LB. Light Blue
- LP. Light Pink
- LPE. Light Purple